



VISION Exposing urban challenges to entrepreneurial solutions



GOVERNMENTS DEFINE PROBLEMS...

but are structurally unsuited to attracting and sustaining innovation.

Risk Averse

Favors
Status Quo

Shrinking Budgets

ENTREPRENEURS SEEK OPPORTUNITIES...

but may not be aware of social issues that need the most attention.

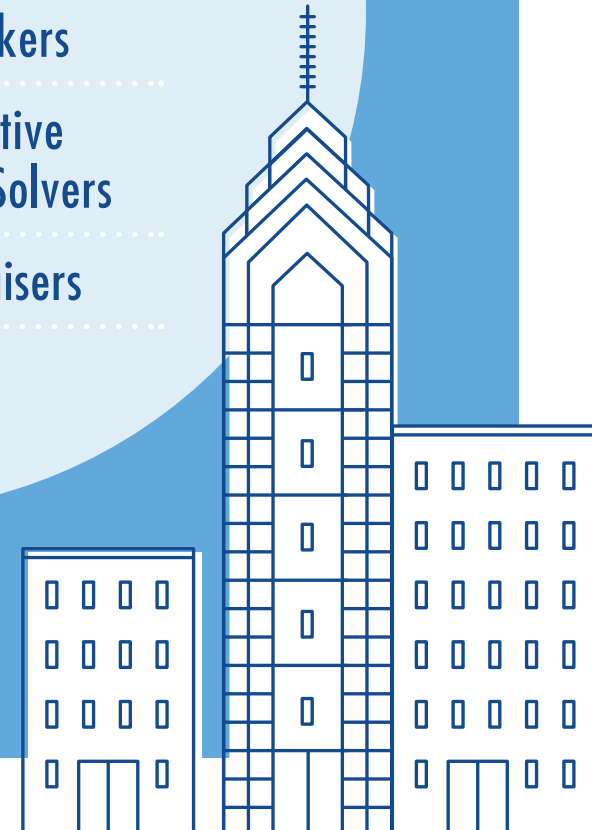
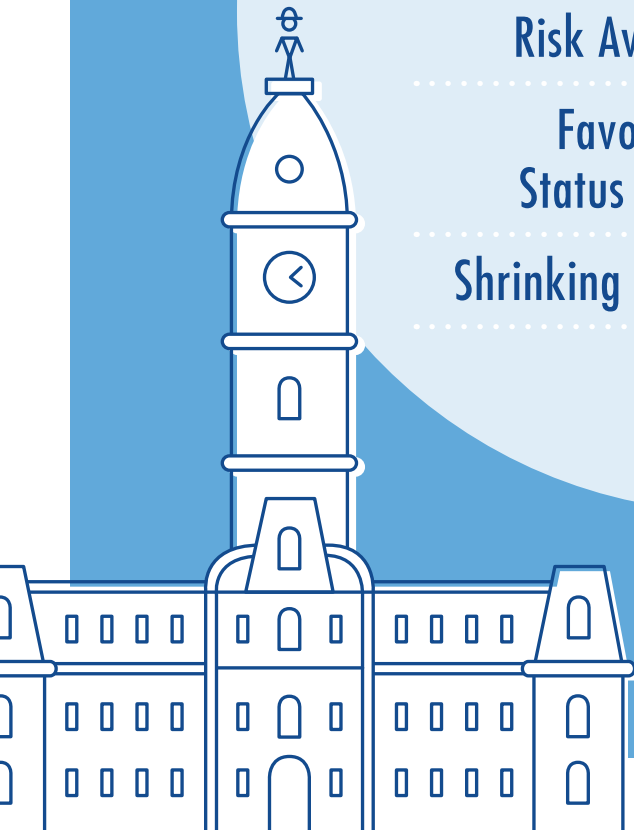
Risk Takers

Innovative
Problem Solvers

Fund Raisers

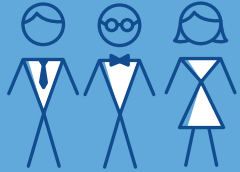


TOGETHER, city governments and entrepreneurs can collaborate with experts in the field to identify problems and implement innovative solutions.



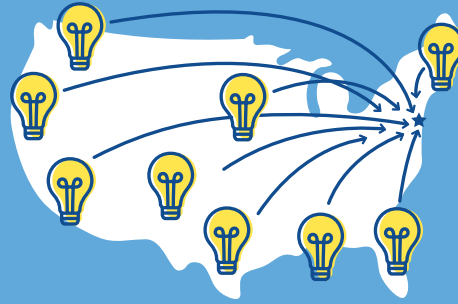


IMPLEMENT



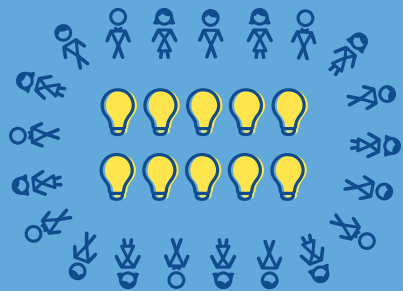
1 PRIORITIZE & REDEFINE

Executive board to identify critical city problems.



2 OPEN CALL

Nationwide open call for entrepreneurial solutions. From thousands, 10 solutions are selected for focused business accelerator.



3 ACCELERATE

Bring together City officials, policy experts and representatives from business to help entrepreneurs develop companies.



4 LAUNCH AND FUND

Top solutions will be awarded early stage funding while others actively engage with local funding partners.



IMPACT



5 SOLVING CITY PROBLEMS

Once these businesses take off, the city will see the benefits of the program.

30 new start-ups per year

30



stronger relationships between government, academia and entrepreneurs

an accessible government-facilitated process for innovation



increase local government's reputation as an entrepreneurial hub



fundraising through private capital investments



REPLICATE



6 SHARE

The impact of PSEP won't be limited to Philadelphia. Not only could successful entrepreneurs go nationwide, but the solutions and model can be shared with cities from across the country.